

**Volume**

**4**

TRACKS4AFRICA

---

Overland Navigation

**T4A GPS Maps  
& MapSource®**

OVERLAND NAVIGATION

# T4A GPS Maps & MapSource®

---

© Tracks4Africa Enterprises (PTY) Ltd  
Millennia Park, 16 Stellantia Avenue  
Stellenbosch, 7600, SOUTH AFRICA  
Phone +27 (0)21 883 9212 • [www.tracks4africa.com](http://www.tracks4africa.com)

Garmin® is a registered trademark of Garmin Ltd. Or its subsidiaries, registered in the USA and other countries.  
MapSource®, MapInstall®, Zumo™, Nuvi™, Quest™, StreetPilot™ and eTrex™ are trademarks of Garmin Ltd or its  
subsidiaries. Windows® is a registered trademark of Microsoft Corporation.

---

# Table of Contents

Introduction .....	2
About T4A GPS Maps.....	3
T4A GPS Maps Installation .....	5
Transfer T4A GPS Maps to GPS.....	8
How to View T4A GPS Maps.....	8
MapSource® Settings .....	9
Zoom Levels of T4A GPS Maps .....	11



# Introduction

T4A GPS Maps are compatible with the Garmin map protocol. This enables an application such as MapSource® to be used to view T4A GPS Maps.

MapSource® also offers many other features relating to route planning, trip and waypoint management as well as Garmin GPS management.

Most maps distributed by Garmin require being unlocked. T4A GPS Maps however does not require the unlock procedure which simplifies the installation of maps.

If you have a Garmin GPS but did not receive MapSource® on a CD, you can obtain a copy by buying any Garmin licensed map product, e.g. Garmap. Also see our document on GPS Settings for more information on this subject.

## About T4A GPS Maps

T4A GPS Maps comprise of 14 regions in Africa. Each region is sold as a separate map tile on our website. If you buy T4A GPS Maps on CD, you will receive all 14 regions as separate maps together with the T4A Maps Traveller's Africa viewer which allows one to view all 14 maps simultaneously.

The coverage of T4A Maps is what we call a Traveller's Africa. All data included in the T4A Maps are submitted by travellers themselves; hence our coverage is bias towards leisure travel and traditional over landing routes.

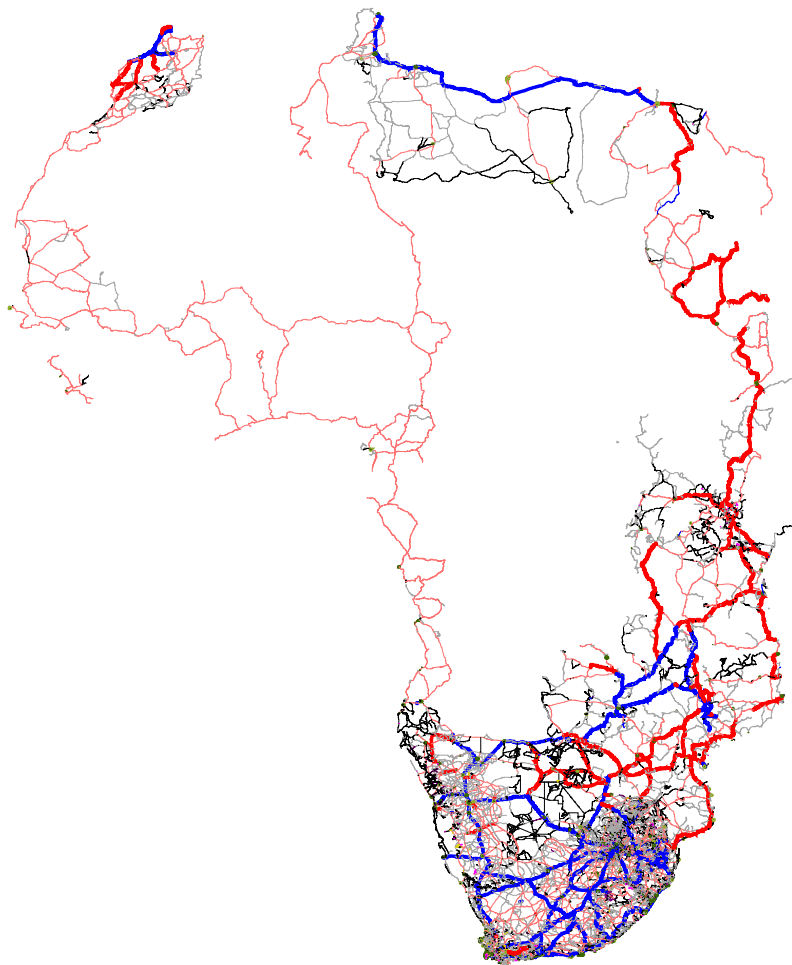


Figure 1: Tracks4Africa Map Coverage

In MapSource® each map tile can be viewed independently, however for the purpose of route planning you may want to view all of the map tiles together on your computer. For this purpose we have created a viewer for T4A GPS Maps and it is called T4A Maps Traveller's Africa. The T4A GPS Maps viewer is

version specific, i.e. T4A Maps Traveller's Africa v8.02 works with version 8.02 map tiles only.

When you install T4A GPS Maps from the CD, the T4A GPS Maps viewer will be installed automatically.

The T4A GPS Maps viewer allows for the following functionality when selected:

- **View** all map regions together
- **Search** for points of interest
- **Select** regional map tiles for transfer to GPS
- Perform **route** calculations in areas where map tiles are auto routable

Although one could select map tiles from the viewer we advise against this practice. Once you have installed an upgrade of any or all regions, the viewer will not be compatible with newer versions and the transfer of tiles would not be possible. We recommend that one select the map tiles individually from each regional map and then transfer to the GPS.

For older GPS with limited memory we also maintain T4A GPS Maps Lite. The map tiles for this map set are significantly reduced by omitting certain geo-features. All T4A roads and points are however included in this map set. Should you require this product simply e-mail us at [sales@tracks4africa.co.za](mailto:sales@tracks4africa.co.za) together with your product registration code and we will send you a copy.

# T4A GPS Maps Installation

There are two ways to obtain your copy of T4A GPS Maps, by buying the entire collection on CD or by buying all or individual regions from our website, [www.tracks4africa.com](http://www.tracks4africa.com).

## BEFORE YOU START

Follow the installation instructions based on the method by which you acquired the maps. Before you start the installation, please take note of the follow points.

1. Make sure your MapSource® application is the latest version. If you have MapSource® installed then you can download a free upgrade from <http://www.garmin.com/support/mappingsw.jsp>.
2. Before you install your T4A GPS Maps close all applications on your computer.
3. Before you install your T4A GPS Maps it is recommended that you uninstall previous versions of T4A GPS Maps that you're about to install. For example, if you want to install a newer version of T4A GPS Maps – Namibia/Angola, then do not uninstall other regions such as Botswana etc.
4. To uninstall older versions of T4A GPS Maps go to Start > Control Panel > Add or Remove Programs and scroll to the particular map (i.e. only uninstall the maps you want to replace with newer versions) you want to uninstall. Click the uninstall option. See image below.

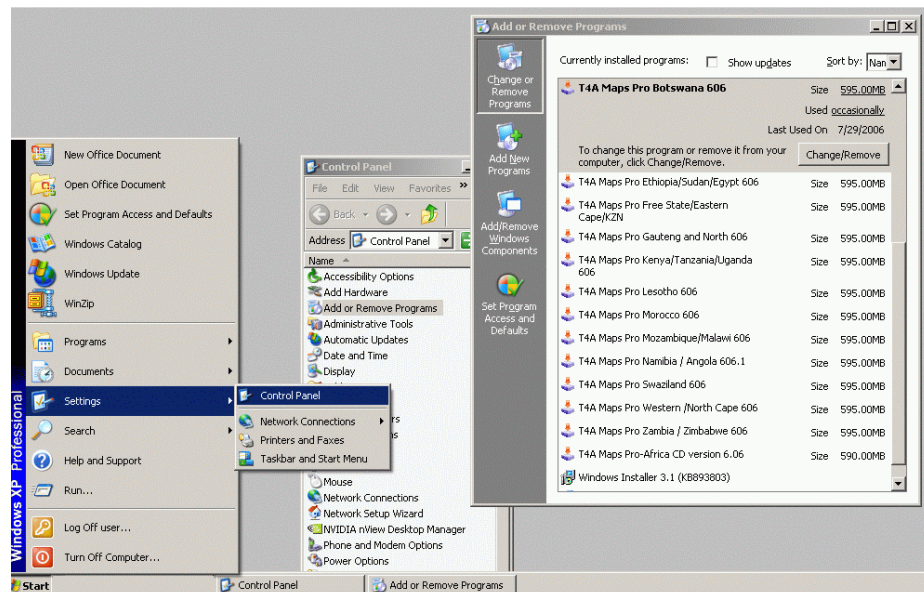


Figure 2: Uninstall T4A GPS Maps

- To un-install newer versions of T4A Maps Pro go to Start > All Programs > Tracks4Africa and select the map you would like to uninstall. See image below.

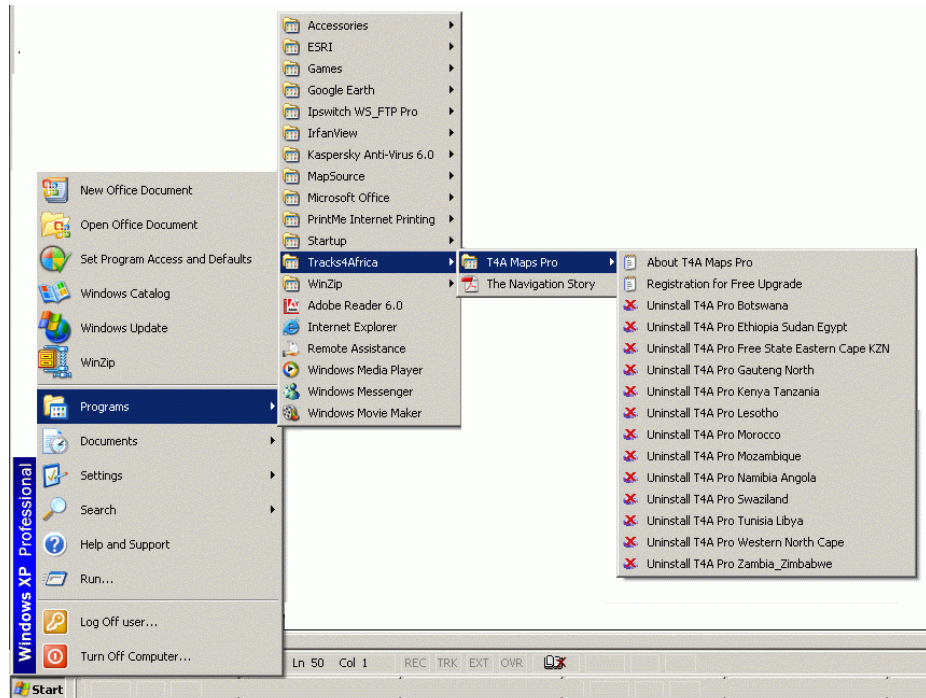


Figure 3: Uninstall T4A GPS Maps from Windows Programs

### Possible errors:

If the installation of T4A GPS results in a **1155 error** then your Microsoft Installer is outdated. Download and install a recent version from the Microsoft website before trying to install T4A GPS Maps again: Windows 95/98/ME (1670 kB) or Windows NT/2000 (1781 kB).

### INSTALL FROM CD

Insert the CD into your computer's CD ROM and wait for the auto run command to activate installation. Should auto run not be working then install directly from the CD. Use Windows Explorer to open the CD contents and browse to the Tracks4africa.exe file. Run this file by double clicking on it and follow the instructions.

Take note there is no option to choose your own installation folder. T4A GPS Maps can only be installed in the folder C:\Program Files\Tracks4Africa\T4A Maps Pro. This is a requirement for future upgrades. This can be a problem to some users who, in rare cases do not have a C-drive on their computers.

Please register your product on our web site. Doing so would entitle you to the very next release of T4A GPS Maps. For customers buying from our web site we automatically register them as being eligible for the next release, however if you bought a CD you need to ensure that you register your CD on [www.tracks4africa.com](http://www.tracks4africa.com) in order to be eligible for the next release. You will be notified by e-mail when the next release is available.

---

**I N S T A L L  
F R O M  
W E B S I T E**

---

Once you have successfully downloaded your T4A GPS Maps from the website you can continue to install them each individually. Please ensure to adhere to the following points.

- When making a purchase on the website, the most important information required by Tracks4Africa is your e-mail address. This is used to send a download link to you as well as to notify you of any future upgrades to which you may be eligible.
- You must download each map separately. If you purchased more than one region's map, ensure that you download all of them from the separate links provided on a single e-mail to you.
- Only once a map has fully downloaded should you start to download a next one.
- Under no circumstances should multiple file download be attempted.
- It is also advised to use the option 'Save' when starting the download instead of 'Run'. This way you can save all of the maps before starting to download them one-by-one. Be sure to select a location on your computer's hard drive that you would easily remember for future reference. We suggest either your Desktop or something like My Documents/My T4A Maps/.
- You are eligible to receive the very next release of the product you purchased. We e-mail you when this release is available for download. If your e-mail address changes, kindly contact [sales@tracks4africa.co.za](mailto:sales@tracks4africa.co.za) to update your details.

**To install individual map tiles**, simply double click on the file you have downloaded from the website. This file is a compressed file (zip file) and it contains the executable file that will install the map tile on your computer. Double click on the executable file in order to run it and follow the on screen instructions.

Continue this process for each file downloaded. Please keep the file you have downloaded should you ever wish to re-install them in future. It is also a good idea to write these files to external memory such as a removable drive or CD.

Also remember to download T4A GPS Maps Viewer and install this separately.

## Transfer T4A GPS Maps to GPS

For Garmin GPS there are two ways of transferring GPS maps to your GPS. You could either use MapSource® or MapInstall®. MapInstall® is available from the Garmin support website and it allows you to only select and transfer maps to your GPS. With MapSource® the process of transferring maps is the same as with MapInstall®, however MapSource® allows for additional functionality such as calculating routes.

It is important to note that when you transfer maps to the internal memory of your GPS, the process will delete any existing maps on the GPS's internal memory. This implies that you cannot transfer map tiles one by one, you have to select all the map tiles you want to use on your GPS and then transfer them all at once.

## How to View T4A GPS Maps

T4A GPS Maps can only be viewed by using MapSource®. After you have installed your T4A GPS Maps, you cannot view them in the Windows environment. You have to open MapSource® and then select T4A GPS Maps from the *product* menu.

# MapSource® Settings

In order to derive the best results from T4A GPS Maps, we suggest the some specific MapSource® settings as explained below.

First of all, make sure that you have the latest version of MapSource®. Updates for MapSource® are available from the Garmin support website. To see if you have the latest version of MapSource® you must be on-line, and then go to the *Help* menu in MapSource® and click on *Check for Software updates...*

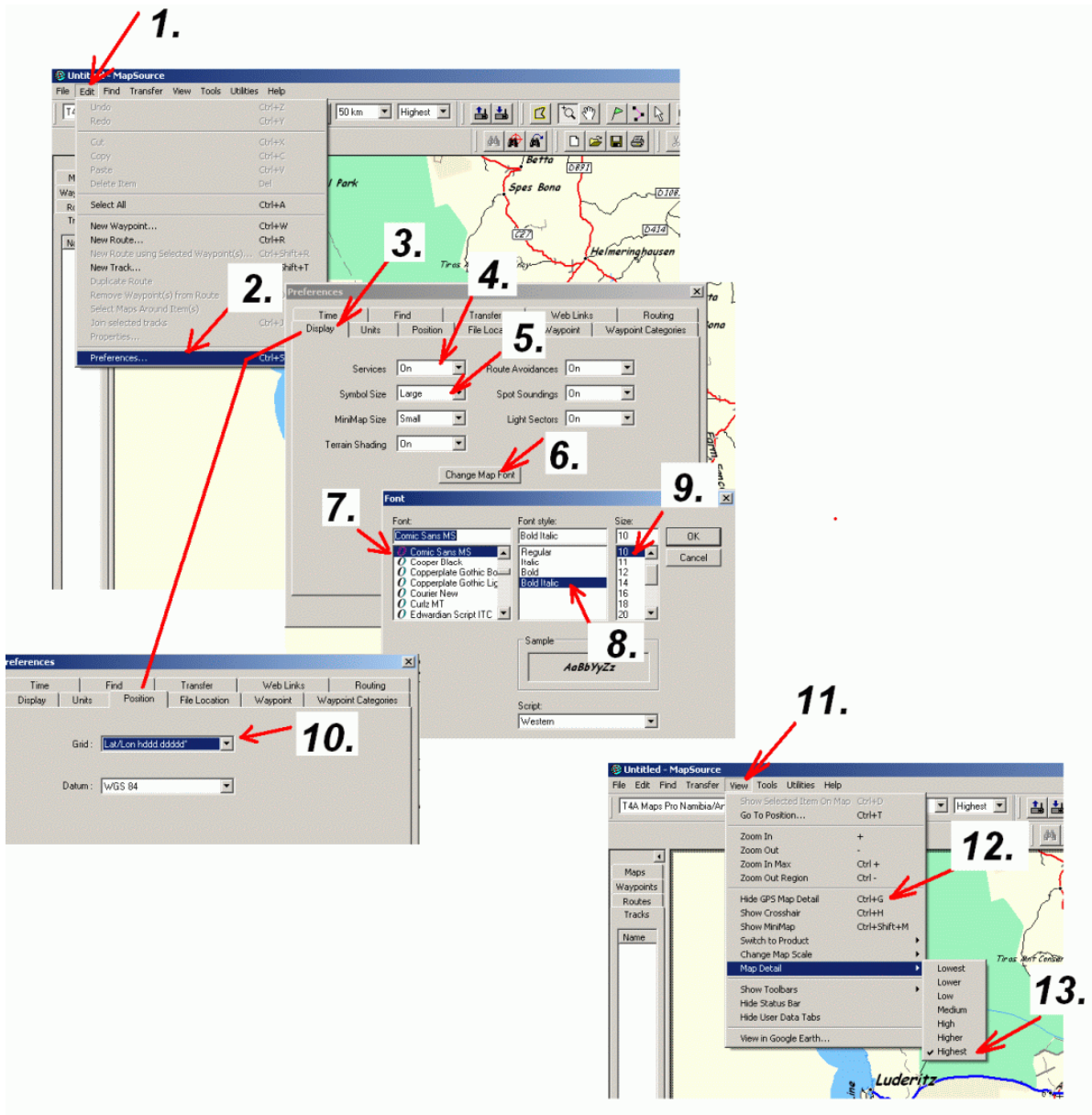


Figure 4: MapSource® Settings

**Specific MapSource® settings:**

- MapSource® has a toggle switch for showing or hiding GPS detail. Use Ctrl-G (hold down the control button while pressing “G”) to toggle between SHOW/HIDE GPS detail. (number 12 in the image above)
- Services = ON (number 4 in the image above)
- Symbols = LARGE (number 5 in the image above)
- Map Detail = Highest (number 13 in the image above)

# Zoom Levels of T4A GPS Maps

T4A GPS Maps are constructed to work on certain principles. One of these are the zoom levels which we choose to display a certain amount of map detail on.

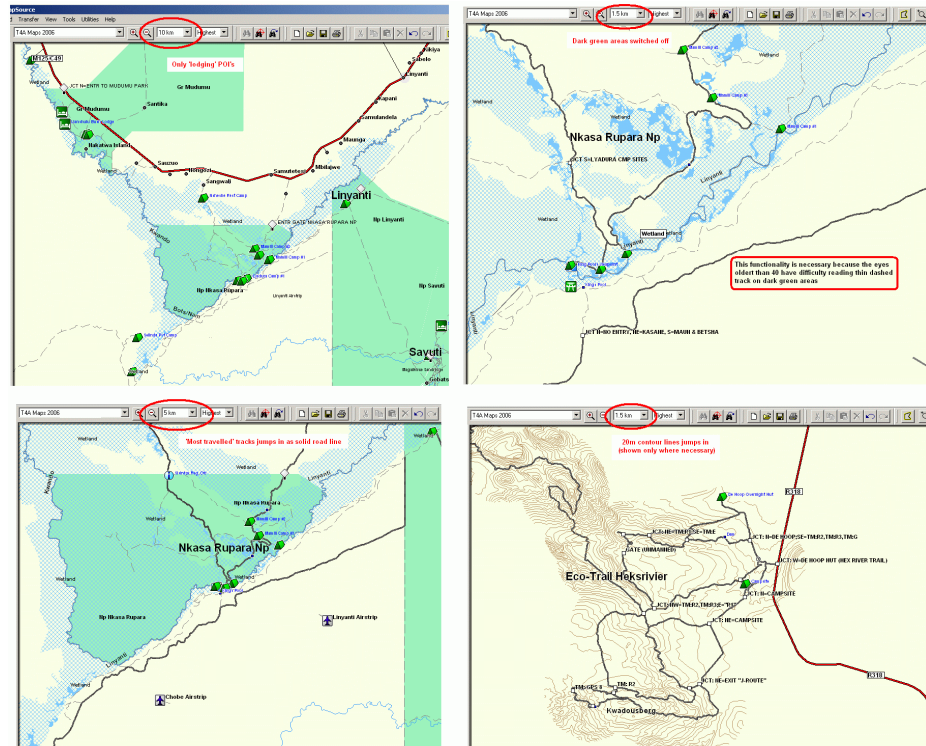


Figure 5: Zoom Levels

The T4A GPS Maps are best viewed at a zoom level of 5km. You may also want to see the stunning and accurate detail using 1.5km zoom level (and closer) at special locations, called T4A Destinations. Download a MapSource® file containing these specific locations at:

[http://tracks4africa.com/misc/T4A\\_destinies.zip](http://tracks4africa.com/misc/T4A_destinies.zip) (10kb)